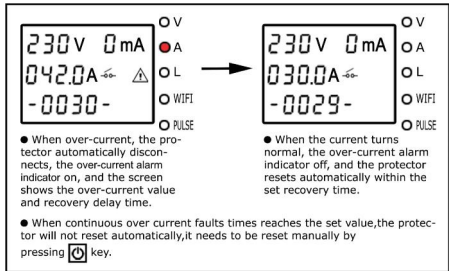
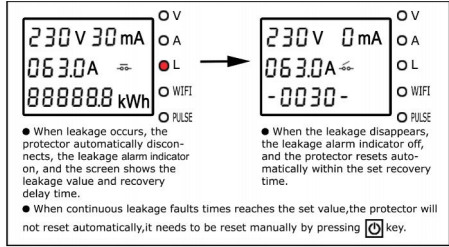


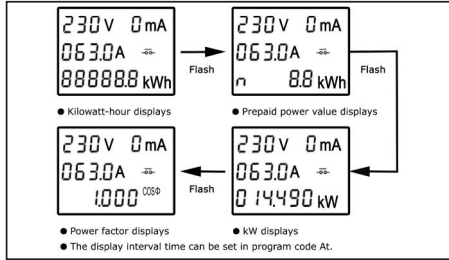
6.3 Over current protection status



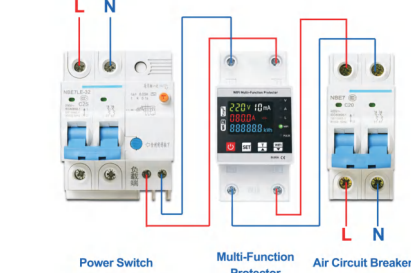
6.4 Leakage protection status



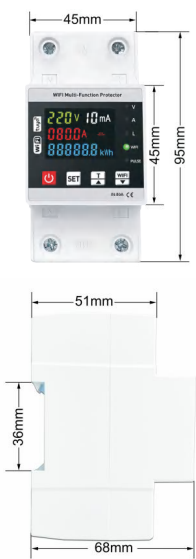
6.5 Kilowatt-hour,kW and power factor display by turns



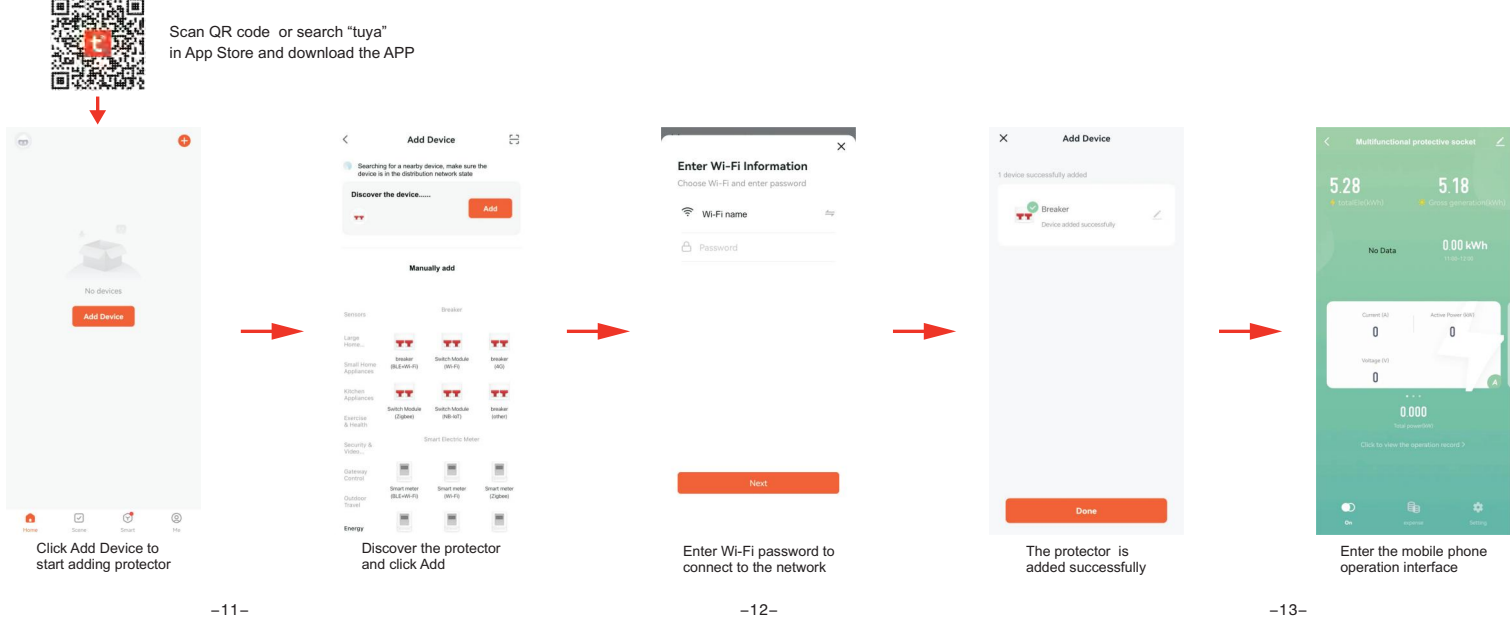
VI.Wiring diagram



VII.Installation dimension



VIII.Protector networking steps



I. Application

Adjustable voltage,current and leakage protective device with kilowatt-hour meter is an intelligent protector integrated with over-voltage protector, under-voltage protector,over-current protector and leakage protector. In case of over-voltage fault, under-voltage fault,over-current fault or leakage in line, this product can instantly power off to prevent electrical equipment from being burnt. The over-voltage, under-voltage,over-current and leakage protection values of this product can all be set up by yourself and can be adjusted on the basis of local practical condition.

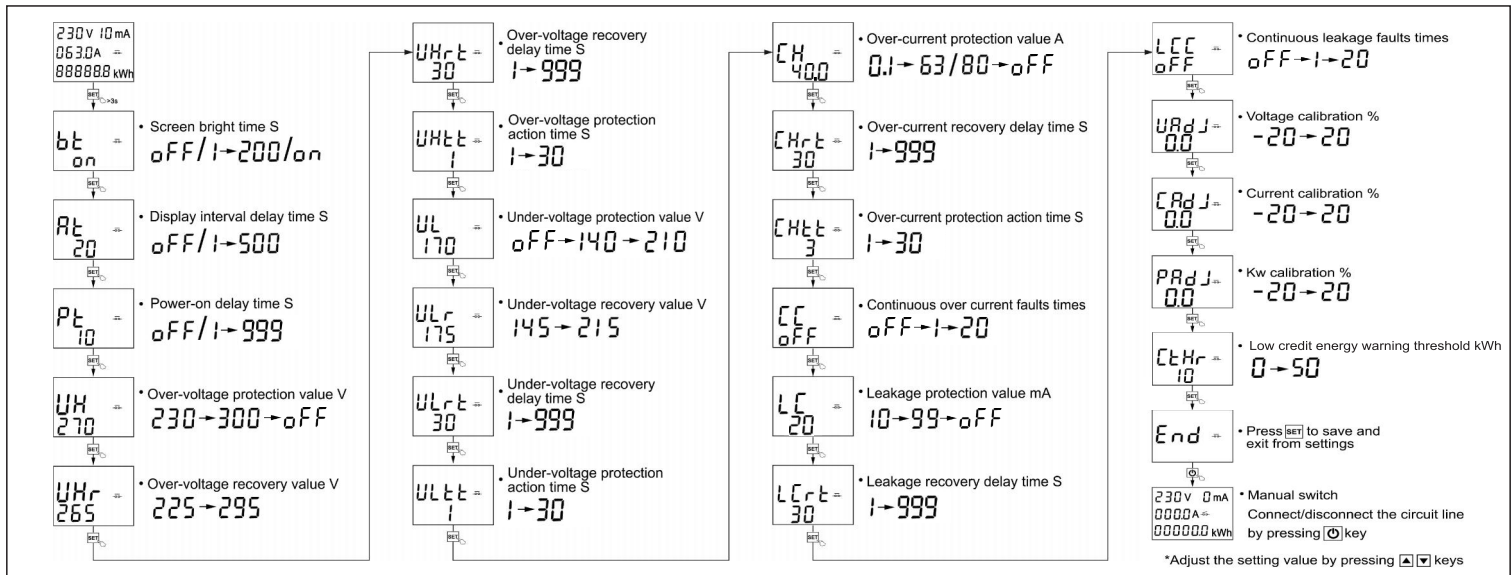
II. Product features

- 2.1 In case of over-voltage fault, under-voltage fault, over-current fault or leakage fault in single phase line, the product can power off the line and can automatically restore connecting the line over a time delay after voltage or current of the line is recovered to normal condition.
- 2.2 In case of transient over voltage in line, the product can protect the equipment from false operation.
- 2.3 In case that the line subjects to unstable voltage or sudden power-off and power-on due to loosened connection and other fault, the product will disconnect the line.
- 2.4 When fault voltage of the line reaches the peak, the product itself will not be damaged.
- 2.5 The protector can display kilowatt-hour, kW and power factor.

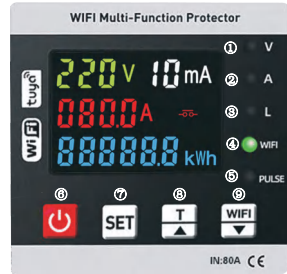
III. Main technical parameters

| Function | Technical Parameter | Function | Technical Parameter |
|---------------------------------|--|---|------------------------|
| Input voltage | AC 140-300V | Power-on delay time | 1-999s default 10s |
| Screen bright time | 1-200s default 20s | Display interval delay time | 1-500s default 20s |
| Over-voltage protection value | 230-300V default 270V | Over-voltage recovery value | 225-295V default 265V |
| Under-voltage protection value | 140-210V default 170V | Under-voltage recovery value | 145-215V default 175V |
| Over-current protection value | 63A:0.1-63A default 40A 80A:0.1-80A default 60A | Over-current recovery value | 0.5-62.5A 0.5-79.5A |
| Leakage protection value | 10-99mA default 20mA | Continuous over current /leakage faults times | 1-20 times default OFF |
| Recovery delay time | 1-999s default 30s | Action time | 1-30s default 1s |
| Voltage/current/ kW calibration | -20%-20% | Power consumption | ≤2W |
| Electrical and mechanical life | ≥100000cycles | Boundary dimention | 95 x 45 x 68MM |

IV. Product setting:



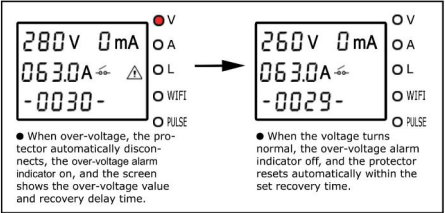
V.Panel indicator lamps and keys instructions



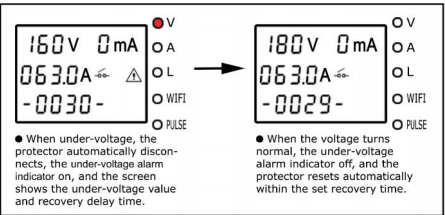
- ① Over/under voltage alarm indicator
 - ② Over-current alarm indicator
 - ③ Leakage alarm indicator
 - ④ WIFI indicator
 - ⑤ Kilo-watt hour meter pulse indicator
 - ⑥ Manual switch
 - ⑦ Set key:Long press for 3 seconds to enter the setting interface
 - ⑧ Adjustment key +
 - ⑨ Adjustment key -
- Test key:Long press for 3 seconds to test the leakage
- WIFI key:Long press for 5 seconds to configure the Wifi

VI.Screen display description

6.1 Over voltage protection status



6.2 Under voltage protection status



Adjustable voltage,current and leakage protective device with kilowatt-hour meter



Instruction manual